

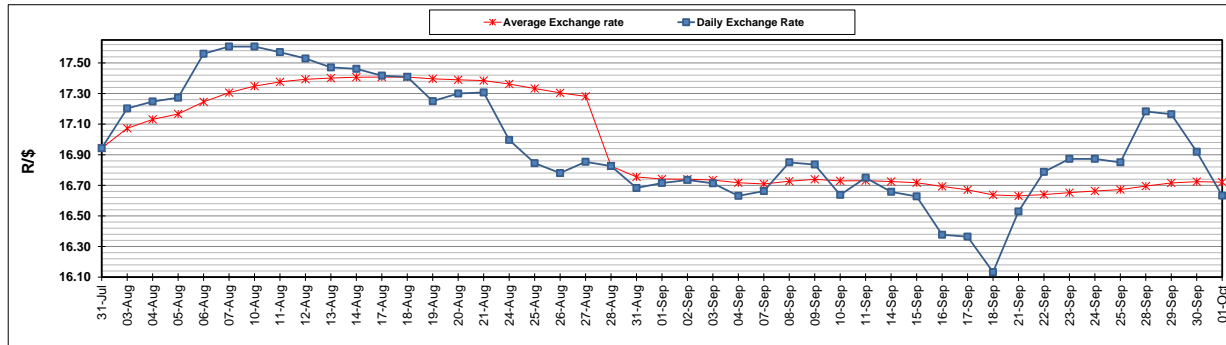
	PETROL 95 ULP	PETROL 93 ULP & LRP	DIESEL 0.05%	DIESEL 0.005%	ILL. PAR.
GAUTENG PUMP PRICE (SA c/l) AS FROM 02/09/2020	1,518.000	1,489.000	-	-	-
WHOLESALE PRICE (SA c/l) AS FROM 02/09/2020	-	-	1,327.560	1,331.960	716.828
SINGLE NATIONAL MAXIMUM RETAIL PRICE	-	-	-	-	899.000
BASIC FUEL PRICE - 01/10/2020 (SA c/l)	529.546	518.632	480.706	482.735	447.990
PRESS RELEASE CONTRIBUTION TO BFP 02/09/2020 - 01/10/2020 (SA c/l)	565.470	546.470	576.630	581.030	512.128
UNIT OVER/(UNDER) RECOVERY - 01/10/2020 (SA c/l)	35.924	27.838	95.924	98.295	64.138
AVERAGE BASIC FUEL PRICE 28/08/2020 - 01/10/2020	534.248	523.591	489.318	491.337	439.625
AVERAGE UNIT OVER/(UNDER) RECOVERY 28/08/2020 - 01/10/2020	31.738	23.395	89.832	92.213	75.623

ANALYSIS MOVEMENT OF AVERAGE OVER/(UNDER) RECOVERY

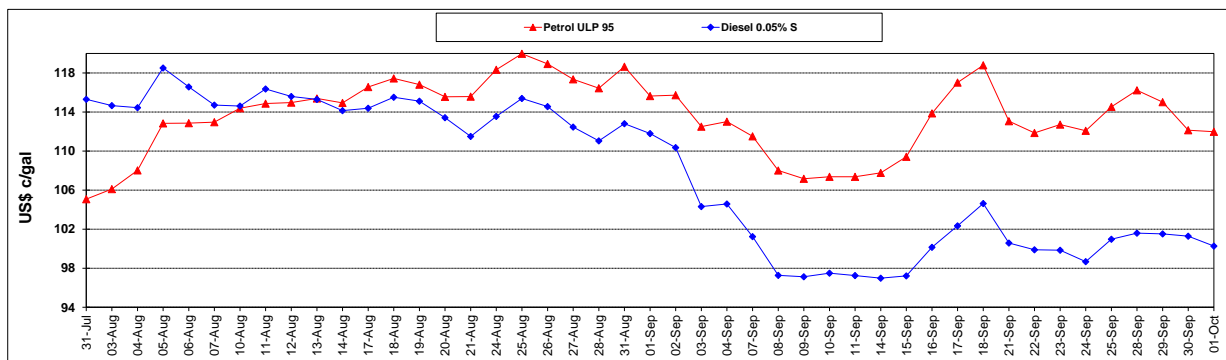
	PETROL 95	PETROL 93	DIESEL 0.05%	DIESEL 0.005%	ILL. PAR.
- MOVEMENT IN INTERNATIONAL PRODUCT PRICES	13.813	5.828	73.414	75.728	60.873
- MOVEMENT IN EXCHANGE RATE	17.925	17.567	16.418	16.485	14.750
AVERAGE UNIT OVER/(UNDER) RECOVERY 28/08/2020 - 01/10/2020	31.738	23.395	89.832	92.213	75.623

R/\$ EXCHANGE RATE - (R/\$16.6325 - 01/10/2020)

EXCHANGE RATE USED IN BASIC FUEL PRICE



INTERNATIONAL PRODUCT PRICES OF BASKET USED IN BASIC FUEL PRICE



BASIC FUEL PRICE IN SA CENTS PER LITRE

